



Elmbridge, Harlow, CM17 0JY

Geoffrey Matthew Estates are delighted to offer for sale this three bedroom, semi detached, family home in the much sought after residential location of Elmbridge, Old Harlow. In need of a degree of cosmetic updating internally, the property itself offers spacious living accommodation, good size bedrooms, driveway & garage.

Certain to prove popular, early viewings are highly recommended!

Offers In The Region Of £440,000

Elmbridge, Harlow, CM17 0JY

 3

 1

 2

 D

- Chain Free
 - Driveway & Garage
- Three Bedrooms
- Semi-Detached

Entrance Hall

Lounge

14'11 x 11'8 (4.55m x 3.56m)

Dining Room

8' x 8'7 (2.44m x 2.62m)

Kitchen

8'2 x 9'1 (2.49m x 2.77m)

First Floor Landing

Bedroom

12'9 x 10'10 (3.89m x 3.30m)

Bedroom

10'6 x 12' (3.20m x 3.66m)

Bedroom

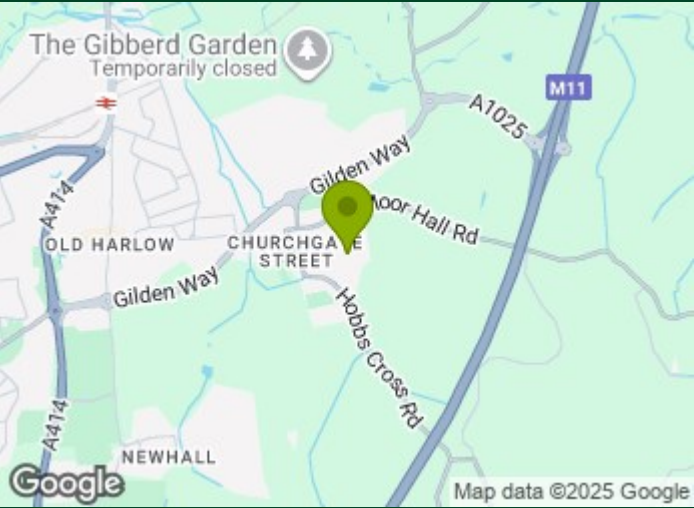
7'9 x 7' (2.36m x 2.13m)

Bathroom

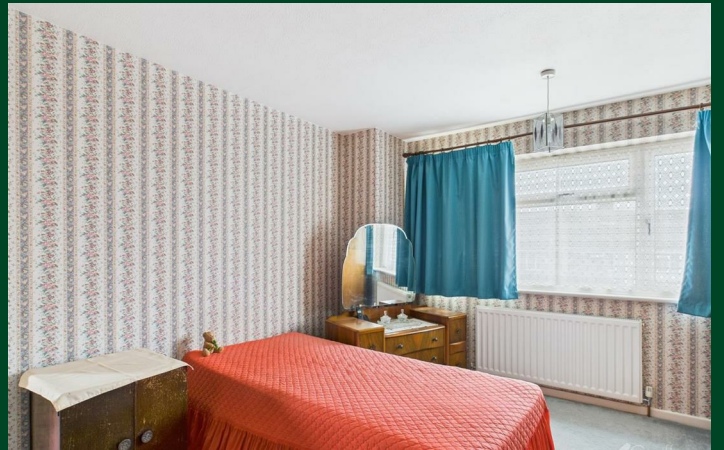
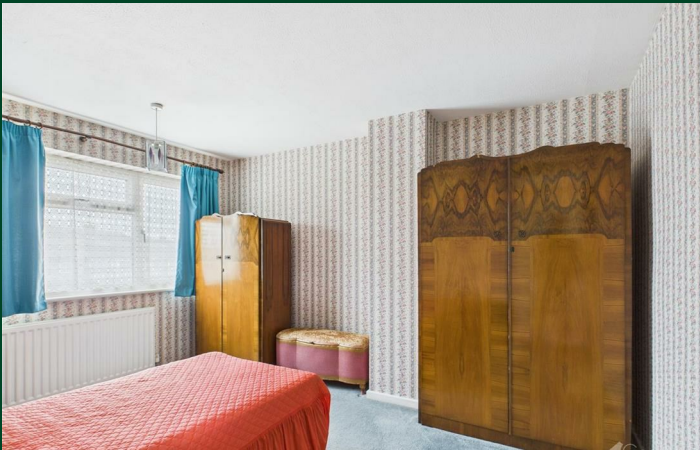
4'11 x 8'5 (1.50m x 2.57m)

Garage

17'8 x 8'4 (5.38m x 2.54m)



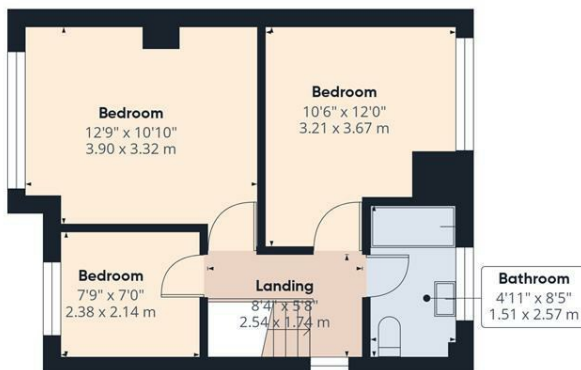
Directions



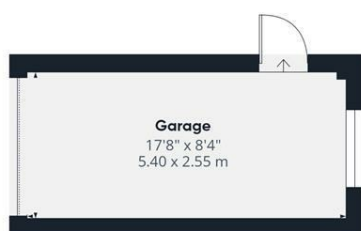
Floor Plan



Floor 0 Building 1



Floor 1 Building 1



Floor 0 Building 2

Approximate total area^(m)

932 ft²

86.6 m²

(1) Excluding balconies and terraces

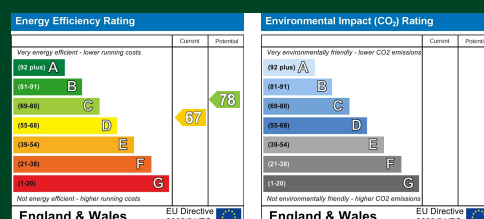
Calculations reference the RICS IPMS 3C standard. Measurements are approximate and not to scale. This floor plan is intended for illustration only.

GIRAFFE360

Council Tax Details

Harlow Band D

These particulars, whilst believed to be accurate are set out as a general outline only for guidance and do not constitute any part of an offer or contract. Intending purchasers should not rely on them as statements of representation of fact, but must satisfy themselves by inspection or otherwise as to their accuracy. No person in this firm's employment has the authority to make or give any representation or warranty in respect of the property.



Old Harlow: 01279 444988 Email: harlow@geoffreymatthew.co.uk
Great Ashby: 01438 740111 Email: greatashby@geoffreymatthew.co.uk